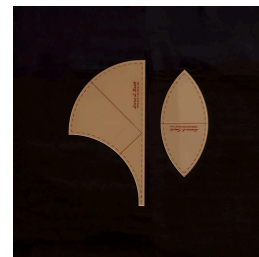


Join us for a delightful day of creativity, skill-building, and community as we embrace these big beautiful curves together!

Half Clamshell



A exciting quilting workshop focused on the Half Clamshell Set! This class is perfect for quilters of all skill levels who are eager to explore the beauty of curved seams. In this hands-on workshop, you'll be working with one or two of the pieces in the Half Clamshell Template Set. They can be used together or independently. We'll start by making beautiful curved seams using scrap fabric provided for practice. The goal is to help you learn to "love your curves" as you gain confidence in your techniques.

Once you're comfortable with the basics, we'll progress to cutting fabric for your unique design. Whether you choose a pre-existing layout or prefer to create something on the go, the choice is yours! For those looking for personalized guidance, feel free to email me any pictures of designs you're interested in, and I'll be happy to provide advice on whether they will be applicable for this class.

Beyond the Sea



Once you have made your decision as to which design you want to make, email or call me so I can send you the supply list for that pattern. I can also answer any questions you might have about any pictures or designs you're interested in. I'll be happy to provide advice on whether they will be applicable for this class.

Rhythm of the Rain



Blue on Blue



Sea Cruise



April Love



Sea of Love



NOTE: It is absolutely necessary to **heavily** starch your fabric before class ! If using yardage I prefer StaFlo liquid starch mixed 1/2 & 1/2 with water.. Dip the fabric in until it is wet. Squeeze out the excess starch and dry. I usually dry in the dryer. Press. When I use spray starch I will spray, allow it to dry. spray again, dry again. PRESS. I use Faultless heavy finish. With either method you may need steam or light sprinkling to get a smooth finish. This step will minimize the stretching that occurs on curved.

When I use spray starch I will spray, allow it to dry, spray again, dry again. PRESS (not *iron*). I use Faultless heavy finish. With either method you may need steam or light sprinkling to get a smooth finish. This step will minimize the stretching that occurs on curved/bias edges. This is an important part of the process to achieve those beautiful successful curved seams.

- Template set - available for purchase in class Half Clamshell \$26.95 + Tax
- Your favorite method of keeping rulers from slipping. Grippy (spray) and dots will be available in class
- Sewing machine in good working order - don't forget your manual, cord and pedal
- If you have a knee lift bring it - it's very helpful
- 1/4" foot is a must (or your favorite way to assure 1/4" seams)
- Basic sewing supplies (scissors, seam ripper, pins, extra machine needles, etc.)
- Glue pen is very helpful for *some* students. Bring it if you have one.
- Neutral thread or thread that coordinates with your fabric choices
- Extra bobbin
- 28mm rotary cutter with new blade – this smaller size is necessary to cut the small curves
- Medium size cutting mat. If you have a rotating mat, bring it. It makes cutting curves much easier
- 6"x12" and 6"x18" rulers
- Sharpie marker.
- Spray starch, not Best Press. We are going for stiff fabric.
- Iron and ironing surface if there is sufficient space and workshop sponsor permits individual irons.
- **Optional:** Foam core or flannel covered board to use as a design wall. 18" sq. is a good size

If you have questions, please don't hesitate to call me. I love chatting with quilters!

Debby Walters
281-610-2543
debby@stripsandcurves.com
stripsandcurves.com